

EC

---

65

---

TB

---

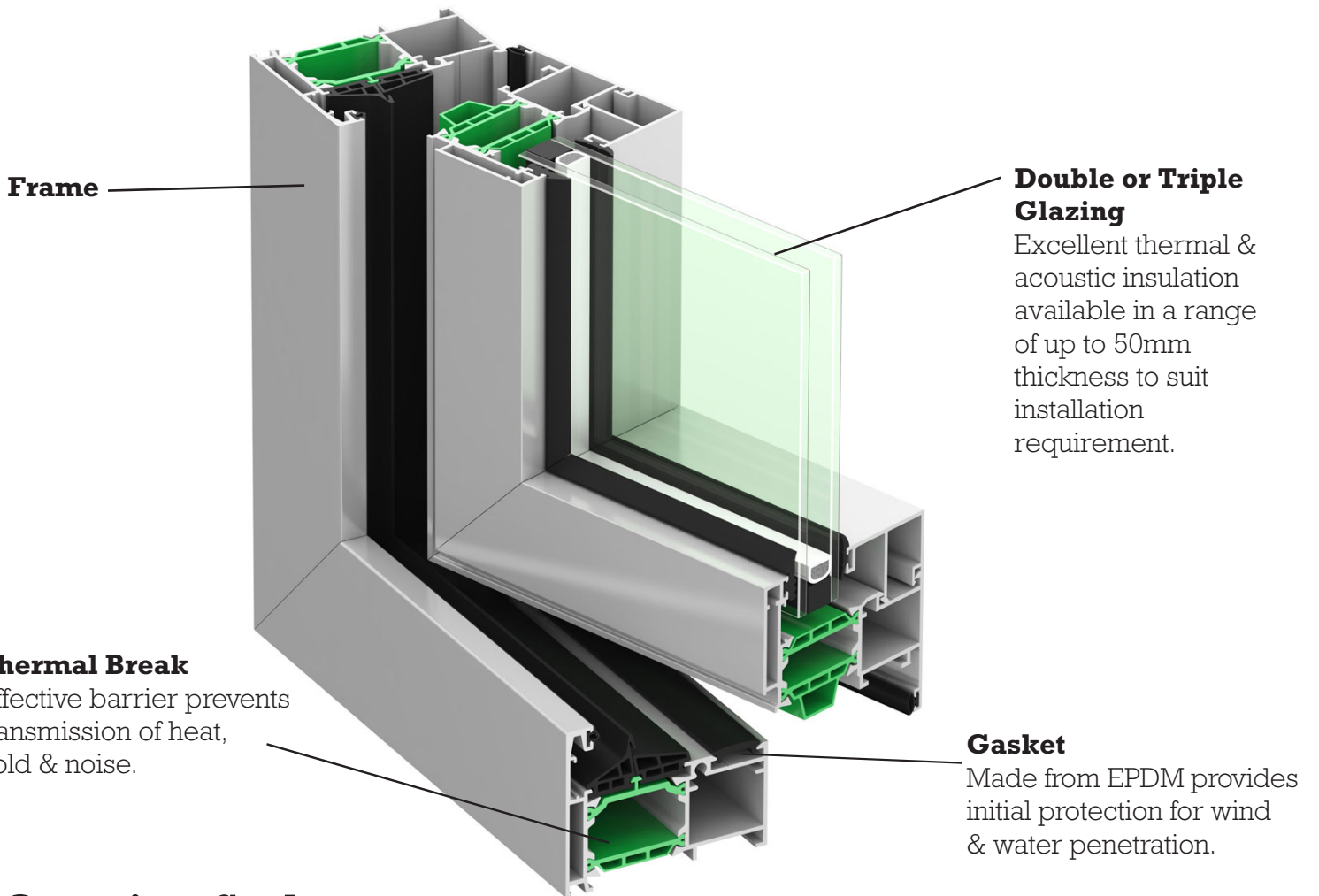
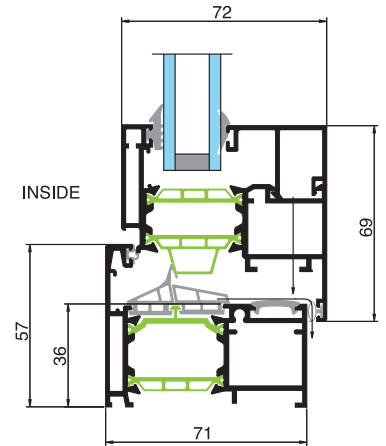
Highly advanced and  
insulating thermally broken  
residential window and  
door system

  
**Thermeco**

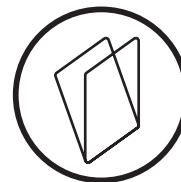
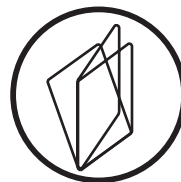
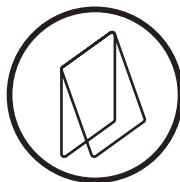
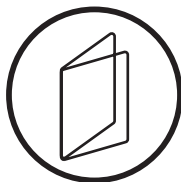
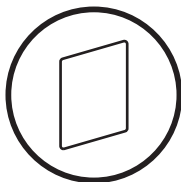
Windows for meaningful living.

# EC65TB

EC65TB designed to meet the highest energy rating requirements and offering superior thermal performance for the most demanding architectural projects no matter where the location is in Australia. Thermally broken systems have been designed for improved energy efficiency. Our commitment to environmentally sustainable solutions delivers you greater comfort living and increased savings in your heating and cooling costs.



## Opening Styles



Style	Fixed	Casement		Awning		Tilt & Turn	Tilt In	Hinged Doors
		Standard	Savio OS	Standard	Savio OS			
Max Width	Various	1200	1200	1700	1700	1200	1500	1000
Max Height		2500	2700	2000	2000	2500	2200	3000
Max Weight (kg)		80	100	40	100	80	100	80



Architect: Clare Cousins | Builder: BP Pro Built | Photographer: Shayn Cairns



Architect: Townsend and Associates Architects PTY LTD | Build: Manteena



Architect: Wolf Architects | Build: Leone Constructions | Photographer: Capital Image

## Features & Benefits



Double & Triple Glazing



Maximum wind and water tightness



Super efficient thermal insulation



Multi-position locking for added strength & security



Energy savings



High acoustic insulation



Dual coloured profiles



Beauty & design

## Energy Rating WERS



Casement

Fixed

Glazing	Casement		Fixed	
	U	SHGC	U	SHGC
5mm Clear Toughened / 12mm Argon / 5mm Clear Toughened	2.9	0.41	2.7	0.59
6mm Energy Tech / 12mm Argon / 6mm Clear Toughened	2.2	0.36	1.9	0.51
6mm Performa Tech / 12mm Argon / 6mm Clear Toughened	2.1	0.19	1.7	0.26
6mm Insulmax 564 / 12mm Argon / 6mm Clear Toughened	2.3	0.17	1.7	0.23
6mm Sunergy Clear / 12mm Argon / 6mm Clear Toughened	2.4	0.30	2.1	0.42
6.38mm Clear ComfortPlus / 12mm Argon / 6mm Clear Toughened	2.2	0.35	1.9	0.50
6 LightBridge / 12mm Argon / 6mm Toughened	2.3	0.34	1.9	0.47





Architect: Giovanni Dambrosio | Builder: R+R Vanheek Pty. Ltd.

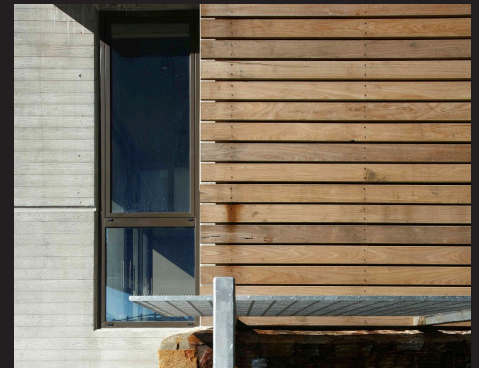
# Windows for meaningful living.



Design: Vibe Design | Build: Icon Synergy



Architect: Inarc Architects | Builder: Vcon Builders



Architect: Salter Architects | Builder: L.U Simon

## Authorised Fabricator

  
**Thermeco**  
Windows for meaningful living.

15 Kelletts Road, Rowville  
3178, Victoria, Australia  
Phone: 03 9763 1089  
Fax: 03 9923 6263  
[windows@thermeco.com.au](mailto:windows@thermeco.com.au)

Members of:



\*The images displayed on this brochure may not always exactly relate to the specified series and are used as representation only.