

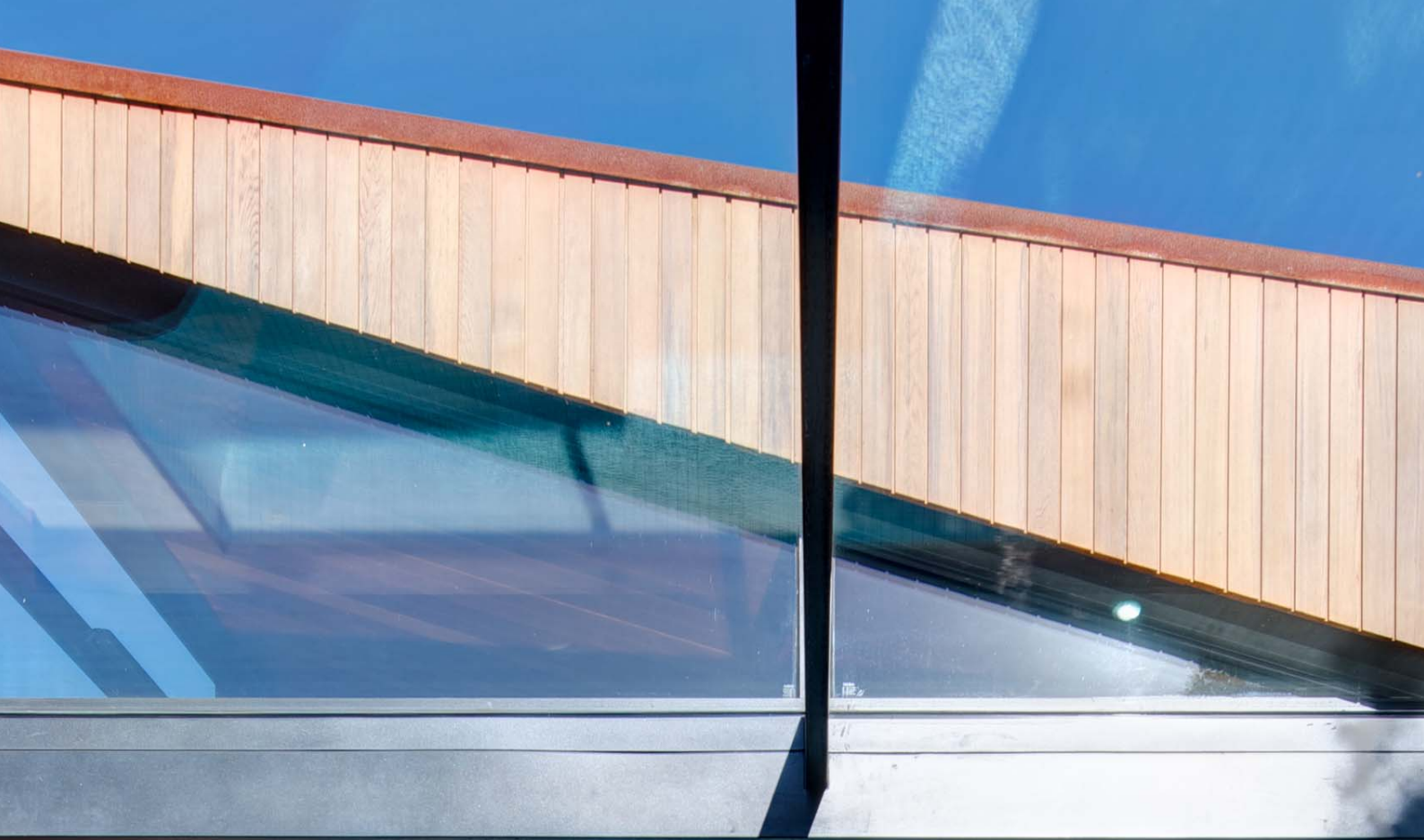
A look into world class windows.

---

  
**Thermeco**  
Window systems for better living.

Open up to a new window  
of opportunities with thermal  
break technology.

---





# Limitless

Inspired by leading international design and manufactured in Australia for local climatic conditions, Thermeco windows are simply in a class of their own. With Thermeco, there are no compromises - only new possibilities for living.

---







# Luxury

Up to 66% more energy efficient than conventional windows, Thermeco's thermal break technology delivers the perfect combination of style and environmental performance. Thermeco redefines luxury living.

---



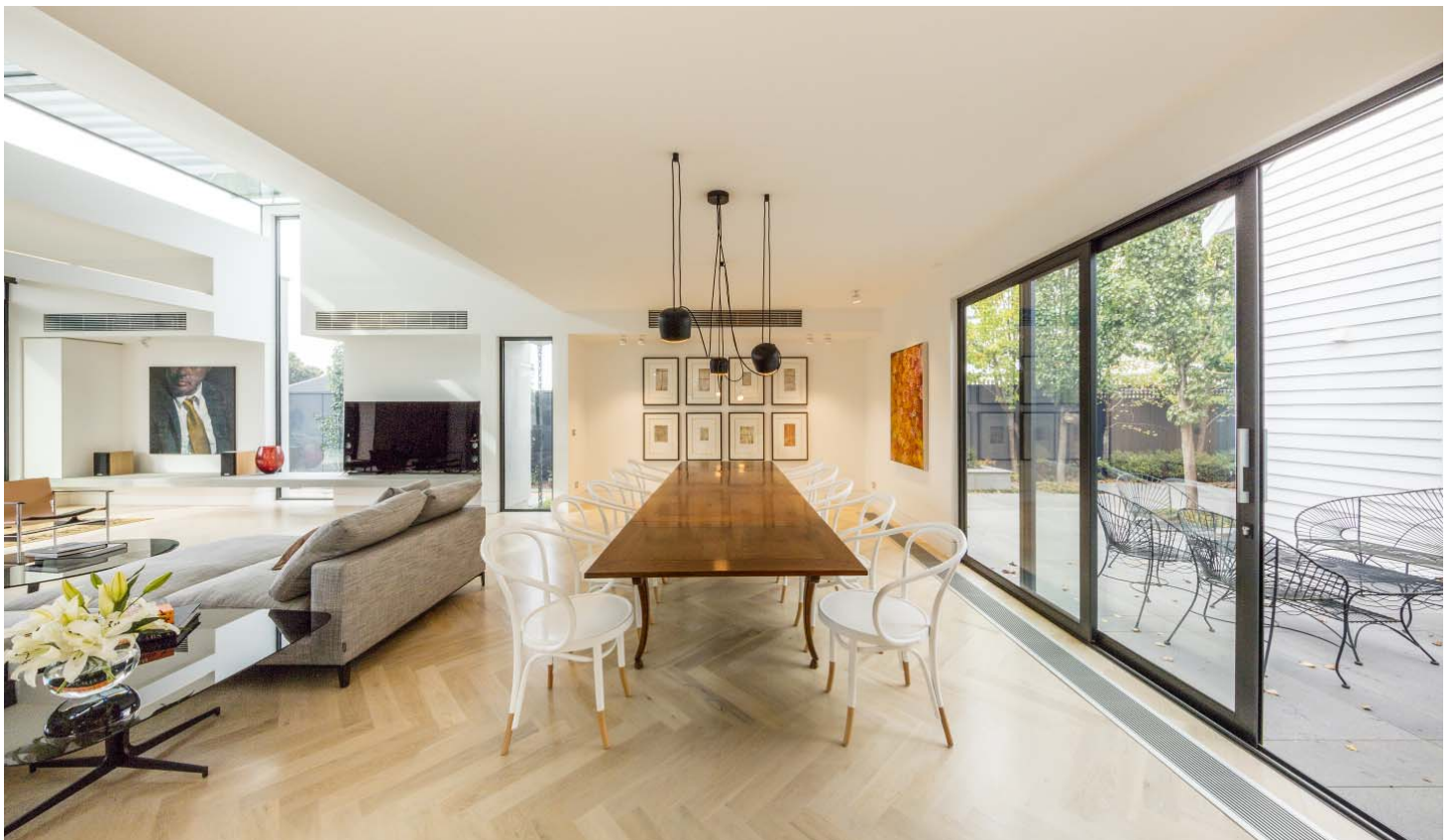




# Urban luxe

---

Enjoy completely expressive design. From classic to cutting edge, our extensive style and colour combinations make Thermeco the preferred choice in many of Australia's most spectacular homes.



# Seaside

---

Coastal properties present their own unique challenges. Thermeco aluminium windows are designed to showcase stunning views while standing up to high winds and salt water.









# Country living

---

Invite the landscape in and connect with the natural beauty of the your surrounds. Thermeco windows frame the countryside to create postcard perfect views while protecting you from the harshest Australian environmental conditions.



# Thermeco story.

---

Thermeco is an Australian leader in high efficiency, thermal break window and door systems – setting the standard for innovation, design and quality.

Through Thermal break technology, we are able to create windows that deliver superior energy efficiency and acoustic performance. This means you enjoy absolute comfort in the home minimising your carbon footprint.

Inspired by the very best of international design and engineering, we combine the highest quality European hardware with Australian manufacturing to provide truly tailored and unique solutions for some of Australia's most distinctive residential and commercial projects.

Available in a range of architectural profiles, Thermeco windows allows you to build amazing and highly individual living spaces. Whether it's a hideaway in the snow, a seaside escape, your primary home or commercial building, the design possibilities are endless.

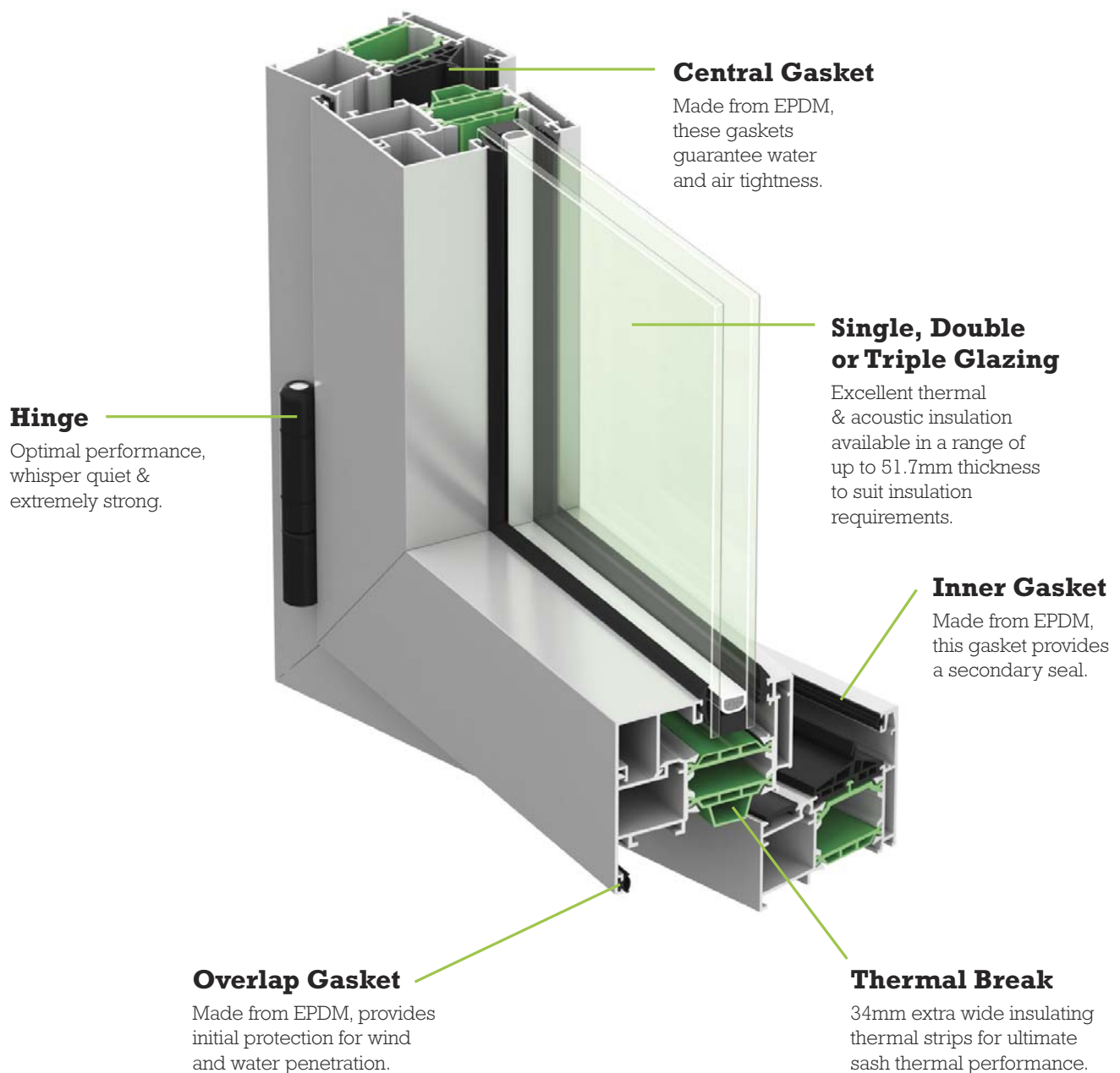
As a member of the Australian Window Association (AWA), we are committed to the highest industry standards.

All of our products are recognised by the Window Energy Rating Scheme (WERS). Our products have been tested to Australian standards (AS2047). All of our Thermeco products can be purchased and installed by one of our approved licensees.




# See the difference

The stunning lines of Thermeco's aluminium windows disguise a number of advanced technologies that make our system one of the most advanced in the world.



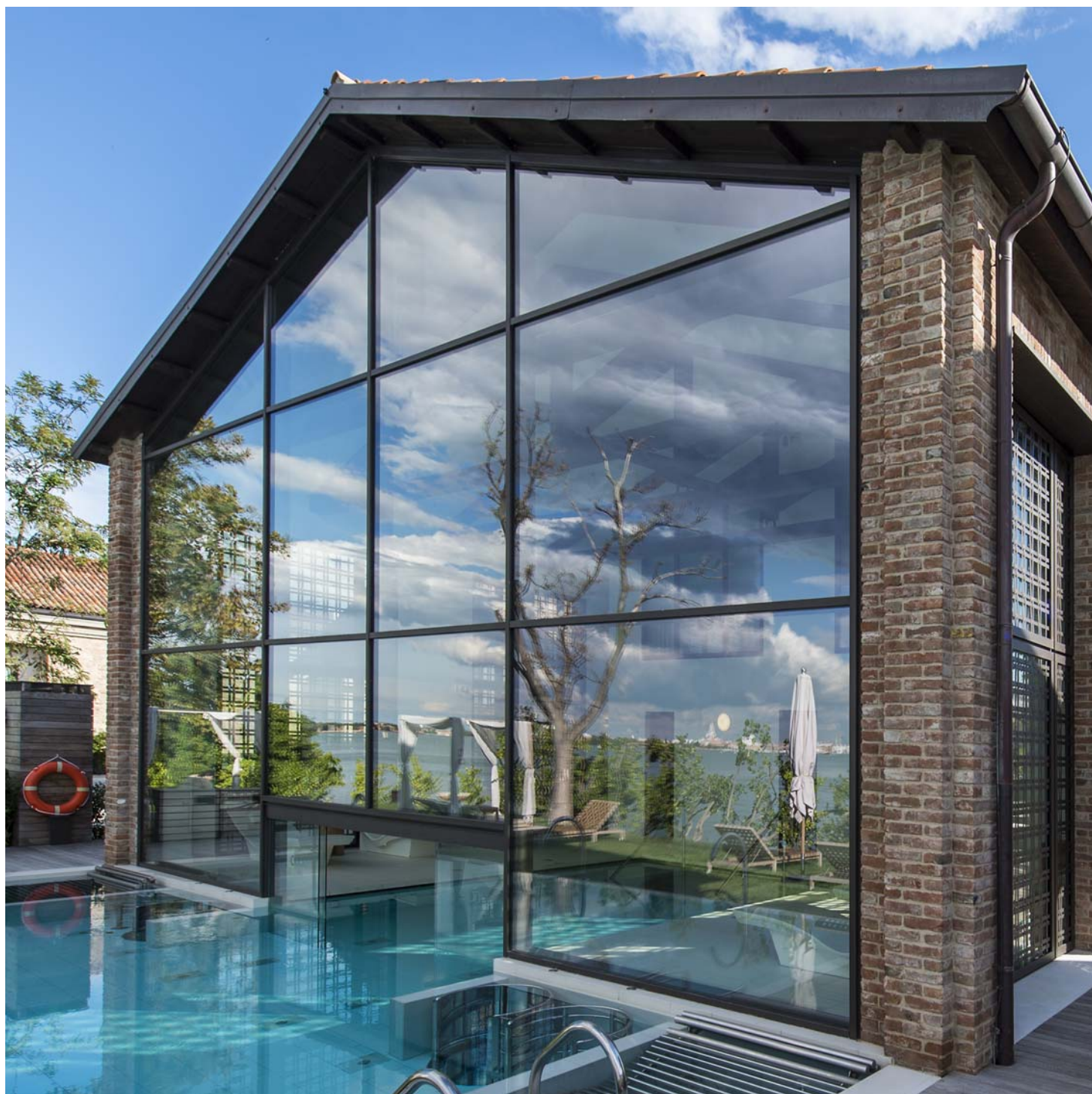




Frame the beauty of the  
surrounding environment.

# Our global **partners**

---



**secco**

Along with our extensive range of aluminium windows, Thermeco is the official Australian supplier for two of the world's leading window brands, Secco Sistemi and KELLER minimal windows®.





# Steel and Brass

---





With 70 years of experience, Secco Sistemi is the leading Italian brand for steel and brass window and door systems. The exclusive thermally broken profiles are available in galvanized steel, stainless steel, corten and brass frame options. Tested to Australian standards, we can finally achieve beautiful, strong, slim line solutions that are able to be customised along with amazing performance.



Famous for Luxembourgian precision and craftsmanship, KELLER minimal windows® specialise in large format, almost frameless fixed glass and sliding sections. The company is renowned for their largescale windows and sliding doors created at heights of up to 4.5m (6m on request). KELLER's advanced window designs allow for modern, open living concepts that truly enhance the panoramic experience.



# See the possibilities

[thermeco.com.au](http://thermeco.com.au)







Architect & Build: The MADE Group  
P 1

Architect: Matyas Architects  
Build: Len Bogatin and Associates  
P 2, 8, 21

Architect: Vibe Design  
Build: Icon Synergy  
P 4

Architect: Pleysier Perkins  
Build: Wade Builders  
P 6, 24

Architect: Latitude Architects  
Build: CEA Constructions  
P 7

Architect & Build: Modscape  
P 7, 8, 11

Architect: Inarc Architects  
Build: Vcon Builders  
P 8

Architect: LSA Architects  
Build: Project Build  
P 9

Architect: Clare Cousins  
Build: BP Pro Build  
P 10, 11, 13, 15

Secco Sistemi  
P 16, 18, 19

KELLER minimal windows®  
P 17, 20, 21

Architect: Rachoff Vella  
Build: G & S Morris  
P 22







Thermeco  
15 Kelletts Road, Rowville,  
3178 VIC, Australia  
T +61 9763 1089  
F +61 9923 6263  
[windows@thermeco.com.au](mailto:windows@thermeco.com.au)

[www.thermeco.com.au](http://www.thermeco.com.au)